



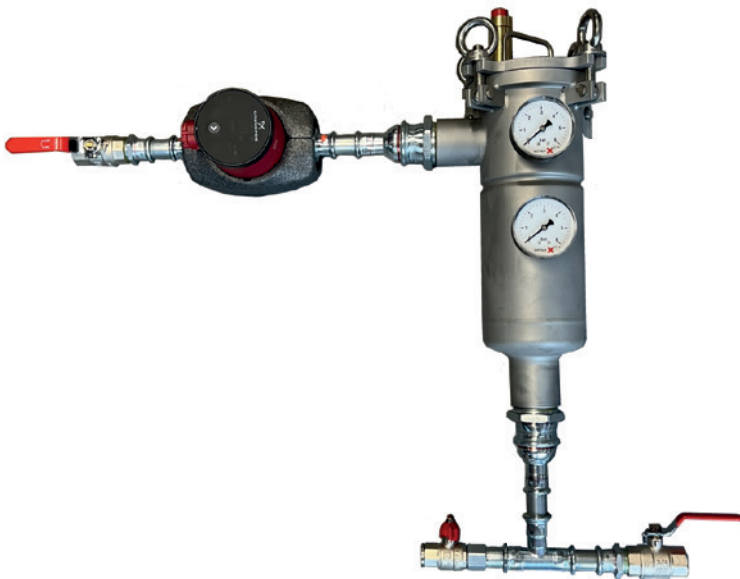
SFU 2+

slibstream filter with pump

Corrosion occurs in many pipe systems of heating installations. This also applies to process water systems and in ring pipes, pumps, boilers and heat exchangers. By using the SOTEX partial flow filters, the quality of the medium is significantly improved. The SFU is available in multiple capacities, the first in the series is the new SFU 2+.

This SFU 2+ can easily be used as a wall-mounted unit. This makes it ideal for smaller system contents, such as smaller utility projects and on board yachts. Suitable for partial flow filtration of 1 to 2 m³/hour for systems with main flow of up to 20 m³/hour.

Supplied as standard as a 6 bar version, the pressure gauges have a scale from 0 to 6 bar. On request also available with pressure gauges with a scale from 0 to 10 bar.



wall mounting	✓
magnet bar 12"	1
air-vent included	✓
two pressure gauges	✓
draine valve	✓
v-clamp locking lid	✓
complementary pump	Alpha 1 15-40 130
motor power [W]	3 - 18
e-connection (50 Hz) [VAC]	1x 230
power consumption [A]	0,04 - 0,18
filter bag included (50 µm)	2
diameter filter [mm]	114
filter height [mm]	362
system connection	3/4"
max. capacity [m ³ /h]	2
max. working pressure [bar]	6 or 10
max. temperature [°C.]	90

SFU 2+