



Cleanomat® Pro

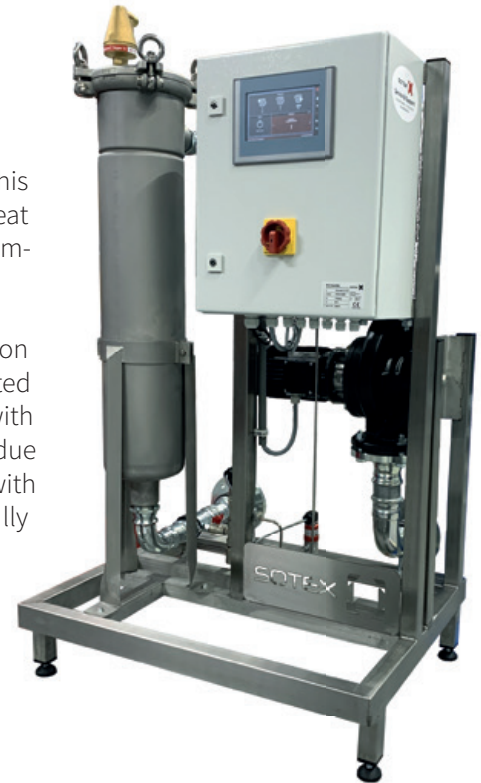
automatic partial-flow filter unit

Corrosion occurs in many piping systems of cooling and heating installations. This also applies to process water systems and in loop pipes, pumps, boilers and heat exchangers. By using the SOTEX partial flow filter installations, you considerably improve the quality of the medium.

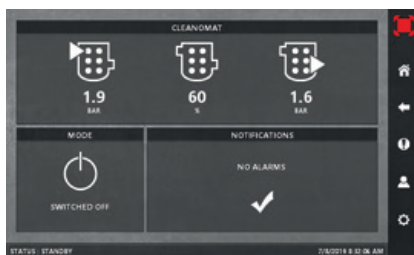
The most efficient and user-friendly version in the SOTEX partial flow water filtration program is the CleanoMat®. The SDF filter is supplemented with a carefully selected centrifugal pump, switch panel with Siemens PLC and Touchscreen together with a robust pressure difference measurement with signaling when the filter bag is due for replacement. All this assembled on a stainless steel tube frame complete with piping. An extremely effective design to ensure that the partial flow filtration is fully automatic.

On the extremely user-friendly Touchscreen the pressure is displayed (before and after the filter housing) and the contamination degree in percent. Of course, the status with possible error messages and the program mode are also displayed. Continuous or time-controlled operation can be selected within the program mode, and the Cleanomat® can also operate remotely if required.

The units are similar to the structure of the SFU (P) + series and are supplied in the following capacities: 6, 12, 20, 36, 54, 72 and 108 m³ / hour.



Cleanomat® Pro 36



Example Touchscreen Cleanomat®

The Cleanomat® Pro is delivered with a communication module (Modbus TCP/IP), which enables the Cleanomat® to be integrated into the end customer's industrial network. Different signals of the Cleanomat® can be read out with Modbus TCP/IP.

magnet bar
max. number of magnets (optional)
air vent(s) & drain valve included
eye-bolt filter lid
pump model
motor power [kW]
current (50 Hz) [VAC]
filter bag included (50 µm)
diameter filter [mm]
height filter [mm]
system connection (2x) [DN]
max. capacity [m ³ /uur]
max. system pressure [bar]
max. temperature [°C.]
max. system content [m ³]
width ss tube frame [mm]
depth ss tube frame [mm]
height ss tube frame (± 50) [mm]

	Cleanomat® 6	Cleanomat® 12	Cleanomat® 20	Cleanomat® 36	Cleanomat® 54	Cleanomat® 72	Cleanomat® 108
magnet bar	1	1	1	1	1	2	2
max. number of magnets (optional)	1	1	4	4	4	8	8
air vent(s) & drain valve included	✓	✓	✓	✓	✓	✓	✓
eye-bolt filter lid	✓	✓	✓	✓	✓	✓	✓
pump model	TP32	TP40	TP50	TP65	TP80	TP100	TP125
motor power [kW]	0.25	0.25	0.37	0.55	1.5	1.1	2.2
current (50 Hz) [VAC]	3x 400 (optional 1x 230 types 6 up to 20)						
filter bag included (50 µm)	2						
diameter filter [mm]	114	114	195	195	195	2x 195	2x 195
height filter [mm]	362	518	590	980	980	2x 980	2x 980
system connection (2x) [DN]	32 PN10	40 PN10	50 PN10	65 PN10	80 PN16	100 PN16	125 PN16
max. capacity [m ³ /uur]	6	12	20	36	54	72	108
max. system pressure [bar]	10			16			
max. temperature [°C.]	120						
max. system content [m ³]	138	276	460	828	1,242	1,656	2,484
width ss tube frame [mm]	700	700	900	900	1,000	1,000	1,200
depth ss tube frame [mm]	400	400	700	700	1,000	1,000	1,000
height ss tube frame (± 50) [mm]	1,030	1,150	1,335	1,540	1,600	1,650	1,700