



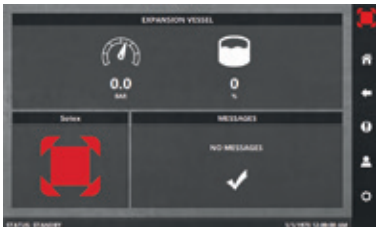
EcoFlex PLE Pro

pressureless expansion automats with pump

The SOTEX EcoFlex PLE **Pro** version is basically the same as the SOTEX EcoFlex PLE expansion automat, the difference is in the control. A **Siemens CPU S7-1200** complete with a **multi-colored touchscreen** replaces the relay technology of the standard version. The SOTEX EcoFlex PLE **Pro** displays the content measurement and the system pressure measurement clearly and effectively on a 7 inch color screen. The measurements are performed by the supplied **4-20 mA pressure sensors** instead of the analogue measurement technology of the standard version.

Another important functionality that is only available with the SOTEX EcoFlex PLE **Pro** is the **refill mode**. Allows you to refill the system automatically, using the software in the PLE **Pro**. If the water level in the expansion vessel is too low, a potential-free signal will be given which you can use to control a pump or valve. Naturally, this signal is interrupted again as soon as the set desired level has been reached. Coupled with a maximum top-up time.

The important advantages of all SOTEX EcoFlex expansion systems are the low investment threshold, ideal for export projects because of the pressureless operation, available for almost any mains voltages, and the very solid and reliable quality and service life. The SOTEX EcoFlex PLE **Pro** expansion vessel is easy to expand with the SOTEX EcoFlex PLV coupling vessels. These coupling vessels make it easy to increase the expansion volume without directly adding an extra control unit.



home screen

	PLE 1500	PLE 2200	PLE 2700	PLE 3300	PLE 4000	PLE 4800	PLE 5300	PLE 6300	PLE 7500	PLE 8900	PLE 10300	PLE 12100	PLE 14000	PLE 18200	
epdm membrane (max. 90°C.)								✓							
robust centrifugal pump								✓ (standard one pump mounted on automat - double pump unit optional)							
system pressure sensor								✓							
solenoid valve (return valve)								✓							
flexibel connection hose (system)								✓							
content monitoring								✓							
motor power pump [kW]					0.37								0.55		
system voltage (50 Hz) [VAC]					3x 400 (special currents on request)										
approval					not applicable - pressure free expansion vessel										
content vessel [l]	1516	2178	2680	3307	4010	4771	5289	6282	7509	8914	10320	12110	13997	18243	
diameter [mm]	960	1270	1270	1270	1400	1400	1600	1600	1900	1900	1900	2200	2200	2500	
totale height [mm]	2627	2265	2665	3165	3170	3670	3208	3708	3260	3760	4260	3795	4295	4350	
system connection					1"							1¼"			
max. work. press. pump [bar]								2							
max. temperature [°C.]								90							